

## TECHNICAL SPECIFICATIONS

### MEDIUM VOLTAGE TRANSFORMER



**Disclaimer:**

STELCO reserves the right to revise this document and make changes without prior notice.

**Document version:**

1.1/2020



**1.1 Specification for 11kV Transformer**

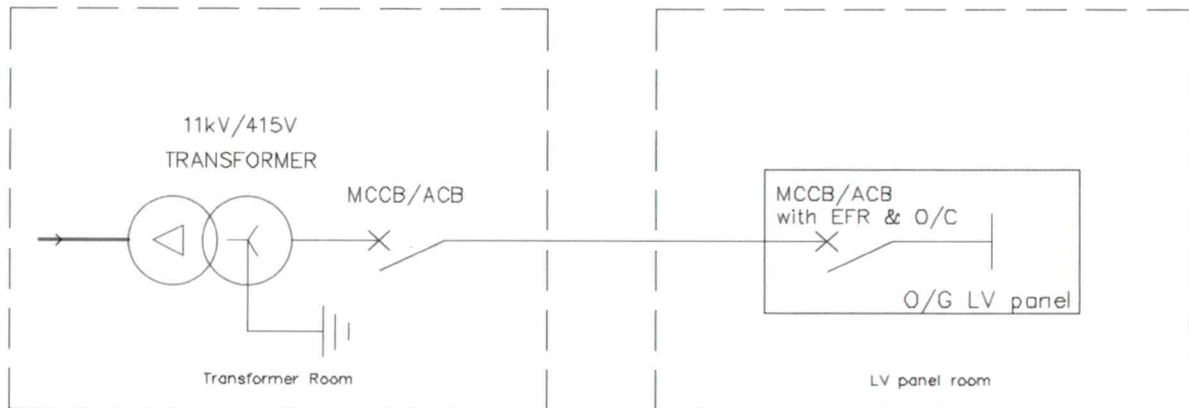
STANDARD: IEC 60076

1	Number of Phases	3
2	System Frequency	50 Hz
3	Nominal System Voltage	11kV
4	High Voltage Winding	12kV
5	Low Voltage Winding	415V (At No Load)
6	Impedance at 75°C	
	Below 1000kVA	4 to 6%
	Above 1000kVA	> 6%
7	Tap Changer Location	HV Winding
8	HV Tap Range	$\pm 2 \times 2.5\%$
9	Winding Material	Copper
10	Vector Group	Dyn11

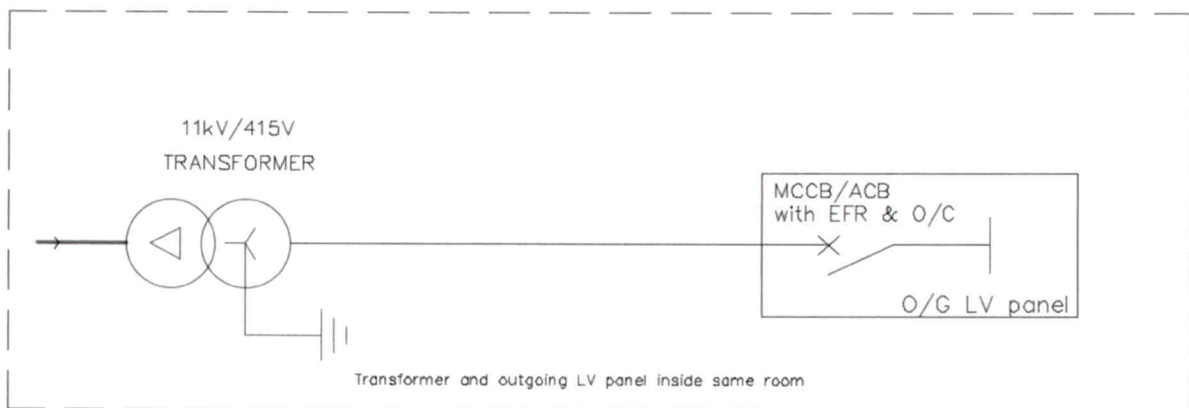
## 1.2 Specification for LV side (Transformer)

Please note that if transformer and outgoing low voltage panel is in separate room / compartment / location (refer to case 1 below), there shall be an appropriate size of circuit breaker installed at low voltage side of the transformer.

### 1.2.1 Case 1: Transformer and outgoing low voltage panel in different location/room.



### 1.2.2 Case 2: Transformer and outgoing low voltage panel in same location.



- 3 pole outgoing ACB/MCCB at LV side of transformer.
- Size of this LV breaker depends on the size/rating of transformer (with Earth fault and over current protection).
- In built EFR should be there